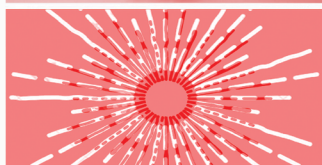
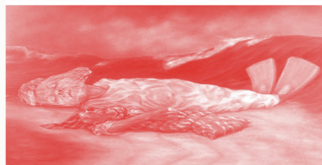
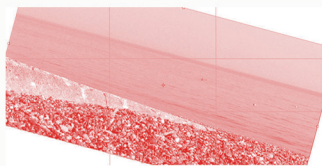


# RED

Join us for the  
**PRIVATE VIEW**

**SATURDAY**  
21st October  
2-4 pm



Red has been the basis for Platform's collective exhibition and research. Red is evocative, it exudes drama, danger, sex appeal, glamour and politics.

This exhibition brings together nine artists exploring aspects of this most evocative of colours, with each artist inspired to create new work.

Taking individual starting points to Red, influenced by their own practice, the artists explore interior and exterior space, identity, displacement, materiality, the body, ways of seeing, storytelling and rituals.

A wide range of media, including painting, sculpture, film, site-specific installation, photography and drawing has been used by the artists in the exhibition.

*RED is the first exhibition of PLATFORM, an Artist Peer Group, which meets once a month at Fabrica, Brighton's Centre for Contemporary Art. It acts as a forum for exchange and collaboration and was set up by Caitlin Heffernan as part of Fabrica's support for artists in the South East.*

FABRICA **PLATFORM** PEER GROUP Waitrose